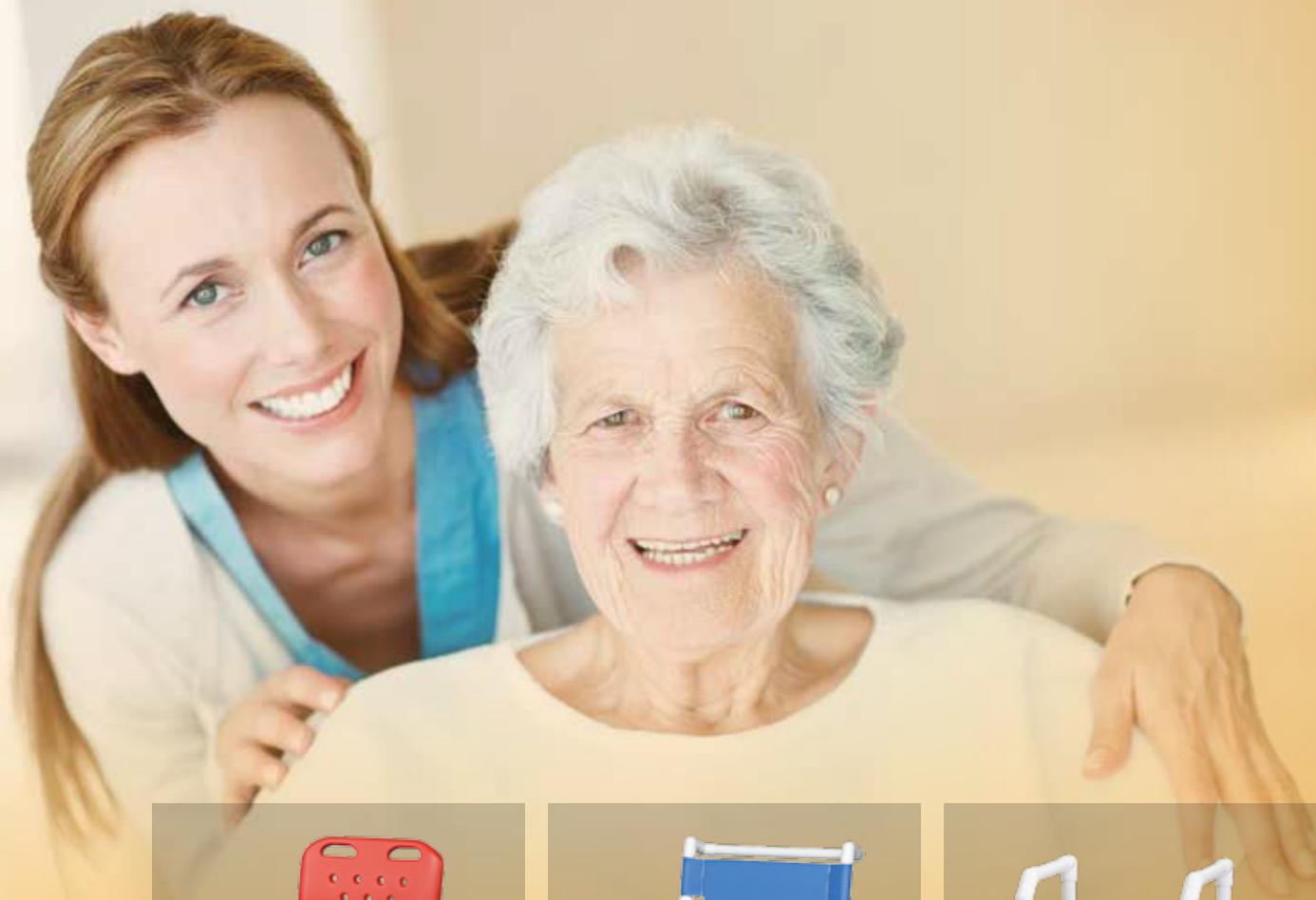


# Better Home Healthcare Equipment From An American Manufacturer



[www.ipu.com](http://www.ipu.com)



INNOVATIVE PRODUCTS UNLIMITED INC

# The Elite Line - A Full Selection Of Shower Chairs



**ELT817 P**  
**ELT820 P**  
 • pail with inside scale P



**ELT817 FR**  
**ELT820 FR**  
 • slide-out, anti-tip footrest FR



**ELT817 FR LB**  
**ELT820 FR LB**  
 • slide-out, anti-tip footrest FR  
 • lap bar LB

**325 lbs**  
 Capacity

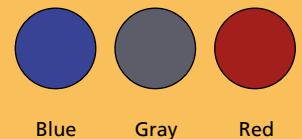
**ELT817**  
**ELT820**



The Elite series of shower and commode chairs from IPU combines blow molding, extrusion and injection molding to construct the strongest, most durable, longest lasting chairs available in today's market.

- virtually indestructible blow molded seat and backrest
- open-front seat and U-shaped opening in seat support allow easy access for bathing care
- special seat design offers unmatched comfort
- snap-on seat lifts off frame for easy cleaning
- backrest with integrated push handles for easy mobility
- never rust, all locking, 3" twin-wheel casters for safety and easy handling
- proprietary formula makes PVC from IPU the strongest and does not allow bacterial growth
- available in 17" (817) and 20" (820) clearance
- 17.25" between the arms
- supports up to 325 lbs capacity
- 817: 40" H x 21" W x 22" D
- 820: 43" H x 21" W x 22" D

Colors for seat and backrest:  
 Add **B** (blue) **G** (gray) or **R** (red)  
 to model number when ordering



# Comfortable, Sturdy, Safe, And Easy To Use



**ELT817 FR LDA**  
**ELT820 FR LDA**  
 ● slide-out, anti-tip footrest **FR**  
 ● left drop arm **LDA**



**ELT817 P FR LB SB**  
**ELT820 P FR LB SB**  
 ● pail with inside scale **P**  
 ● slide-out, anti-tip footrest **FR**  
 ● lap bar **LB**  
 ● safety belt **SB**



**ELT817 P AT**  
**ELT820 P AT**  
 ● pail with inside scale **P**  
 ● anti-tip **AT**

Standard Models ELT817 and ELT820 can have any of these options added.  
 ELT817 has a 17" clearance and ELT820 has a 20" clearance over a toilet.



**P** commode pail



**LDA** drop-down left armrest for easy transfer

**RDA** drop-down right armrest



**FR** slide-out footrest, anti-tip design, easily glides back and forth



**AT** anti-tip



**LB** lap bar



**SB** safety belt

# For Complete Information On All IPU Products -

New wide chairs with comfortable blow molded, open front seats, complete the Elite line.

**375 lbs**  
Capacity



**450 lbs**  
Capacity



Midsize Shower Chair Commode

**SCC8250 MS**

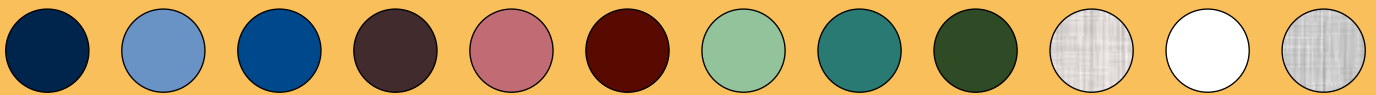
- 5" never rust casters, all locking
- 21" between the arms
- anti-tip
- 40" H x 25.5" W x 31" D
- 19" clearance

Oversize Shower Chair Commode

**SCC8250 OS**

- 5" never rust casters, all locking
- 24" between the arms
- anti-tip
- 40" H x 28" W x 31" D
- 19" clearance

Colors for Sunsure Mesh



Navy Suncast Blue Blue Plum Wineberry Maroon Laguna Teal Forest Green Linen White Silverado

Shower Stools that provide safe, comfortable seating and last a lifetime.

Bariatric Shower Stool

900 lbs  
Capacity



**BSS600**

- 20" H x 24" W x 20" D

Corner Shower Stool

300 lbs  
Capacity



**CSS32**

Fits into the smallest shower stall and offers plenty of seating and leg room when placed into a 90° corner, eliminates the need to install wall mounted seats

- 22.25" H x 21.75" W x 18" D
- 18" seat height, 17.75" between the arms

Shower Stool

500 lbs  
Capacity



**SS65**

- lightweight, yet extremely sturdy
- 19.75" H x 16.5" W x 16.5" D

Shower Bench

300 lbs  
Capacity



**SB210 G/N**

with a comfortable water proof soft seat.

- 25" - 31" H x 21" W x 20" D
- 17.25" between the arms
- seat heights 18" - 24" in 1" increments
- Colors for soft seats: **G** (gray) or **N** (navy)



# Our Most Affordable Shower Chair Commodes



**300 lbs**  
Capacity

Contoured toilet seat  
that clips on for easy  
removal.



**VL SC17 P**

- pail
- 38" H x 21" W x 21.5" D
- 17.25" between the arms
- 17" clearance
- without pail - VL SC17



**VL SC17 P FRLB**

- pail
- slide-out footrest
- lap bar
- 38" H x 21" W x 21.5" D
- 17.25" between the arms
- 17" clearance
- without pail - VL SC17 FRLB



**VL OF17 P G**

- pail
- soft seat in gray G  
(or blue B, see page 2)
- 38" H x 21" W x 21.5" D
- 17.25" between the arms
- 17" clearance
- without pail - VL OF17 G



**VL OF17 P FR G**

- pail
- slide-out footrest
- soft seat in gray G  
(or blue B, see page 2)
- 38" H x 21" W x 21.5" D
- 17.25" between the arms
- 17" clearance
- without pail - VL OF17 FR G

# Toilet Safety Frames

Toilet Safety Frames that do not need to be attached to or taken off from the toilet bowl. Simply place over toilet or remove and use it as Shower or Commode Chair.



### TSF12 P

- pail
- 21" W x 19.75" D
- 17.25" between the arms
- adjustable seat heights  
15.25" - 21.5"
- without pail - TSF12



### TSF12 P G

- pail
- blow-molded seat in gray G
- 21" W x 19.75" D
- 17.25" between the arms
- adjustable seat heights  
15.25" - 21.5"
- without pail - TSF12 G

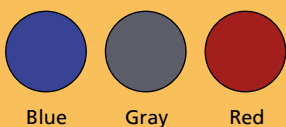
OPT splash guard



### TSF12 P OS B

- pail
- blow-molded seat in blue B
- 28" W x 19.75" D
- 24" between the arms
- adjustable seat heights  
15.25" - 21.5"
- without pail - TSF12 OS B

Colors for blow-molded flat seat:



Blue

Gray

Red



# Easy Transportation In And Out Of The Shower

300 lbs  
Capacity



SAC22 MB B

350 lbs  
Capacity



SAC22 MS N



Shower access chairs for those that cherish their independence or need special assistance.

#### SAC22 MB B

- open front soft seat
- never rust wheels / casters
- left swing arm
- 36.25" H x 29" W x 31" D
- 17.25" between the arms
- 23" seat height

#### SAC22 MS N

- open front soft seat
- never rust wheels / casters
- left swing arm
- 36.25" H x 33" W x 31" D
- 21" between the arms
- 23" seat height

Colors for backrest see page 9



# Deluxe Line Of Shower Chair Commodes

with comfortable, water proof soft seats, available in three different colors, never rust casters and a variety of options to choose from.

300 lbs  
Capacity



300 lbs  
Capacity



300 lbs  
Capacity



## SC717 N

- open front soft seat in navy N
- backrest made of Sunsure Mesh
- 38" H x 21" W x 25.5" D
- 17.25" between the arms
- 17" clearance

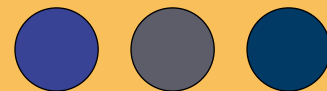
## SCC701 B

- pail
- soft seat in blue B
- soft backrest
- 38" H x 21" W x 25.5" D
- 17.25" between the arms
- 17" clearance

## SCC777 G

- open front soft seat in gray G
- pail
- lap bar
- backrest made of Sunsure Mesh
- privacy skirt
- slide-out, anti-tip footrest
- 41" H x 21" W x 25.5" D
- 17.25" between the arms
- 20" clearance

Colors for soft seats and soft backrests: **B** (blue) **G** (gray) or **N** (navy)



Blue

Gray

Navy

Colors for Sunsure Mesh



Navy

Suncast Blue

Blue

Plum

Wineberry

Maroon

Laguna

Teal

Forest Green

Linen

White

Silverado

# The IPU Pediatric Product Line

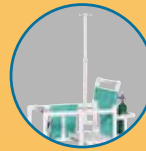
**250 lbs**  
Capacity



## PD W77

- for people under 4'10"
- unique base provides added stability
- adjusts to 7 heights
- easy-open lockbar
- superior dual wheel casters (2 locking)
- side tote bag standard
- comfortable padded seat (gray)
- backrest and side tote bag available in 12 colors, see page 9
- a lot of add-ons and options,
- 33.25" - 39.25" H x 19.25" W x 26" D
- base 28" W x 30" D
- seat heights 14.5" - 20.75" in 1" increments
- 16" between the arms
- support arm heights 23" - 29" in 1" increments

## Add-ons and options:



IV pole



Oxygen tank holder



Lap tray



Sliding footrest

**250 lbs**  
Capacity



## PD OF25 G

### Pediatric Shower Chair Commode

- never rust locking casters
- comfortable soft seat
- height adjustable option available



## PD OF25 P G with pail

- 32.5" H x 20" W x 22.50" D
- seat height 17"
- clearance 13.5"
- width between armrests 16"

## KDL 100

The IPU multi-positional shower chair and bed fits most bathtubs and showers.

**165 lbs**  
Capacity



Continuous positioning of both leg, footrest and backrest



- overall L 43.50"
- width 19"
- height 10.50"
- seat section 15.75"
- backrest 15.75"
- legrest 12"
- weight 15 lbs

# Carts For Special Needs

Carts for special needs, designed in cooperation with and for people looking for better solutions

Storage cart



CLC44

ideal as bathroom organizer cart, offers plenty of space, yet fits in the smallest corners.

- 44" H x 17" W x 17.5" D
- 2 Drawers 3" H x 10.5" W x 13" D
- 2 Drawers 7" H x 10.5" W x 13" D

Home dialysis cart



DC14

offers plenty of space and storage room to move and keep everything that is needed for home dialysis well organized.

- specially designed for PD patients
- sturdy 4-drawer cart with 2 shelves
- easy-roll 3" dual-wheel casters (2 locking)
- available in redwood (shown), and 12 attractive colors, see page 9
- 33.5" H x 33" W x 14.5" D
- 2 bins: 3" H x 10.5" W x 13" D
- 2 bins: 7" H x 10.5" x 13" D
- 2 shelves: 16.25" W x 13.25" D with 11" H spacing



## Therapy step stools

TSS 4

- Therapy steps measure:
- 10" H x 24" W x 21" D
  - 8" H x 20" W x 17" D
  - 6" H x 16" W x 13" D
  - 4" H x 12" W x 9" D

# Better Home Healthcare Equipment From An American Manufacturer



See our complete product line at [www.ipu.com](http://www.ipu.com)



**An American Manufacturing Company**

**Innovative Products Unlimited INC**

2120 Industrial Drive · Niles, MI 49120

(269) 684-5050 · (800) 833-2826

Fax: (888) 757-4734 · E-mail: [ipu@ipu.com](mailto:ipu@ipu.com)